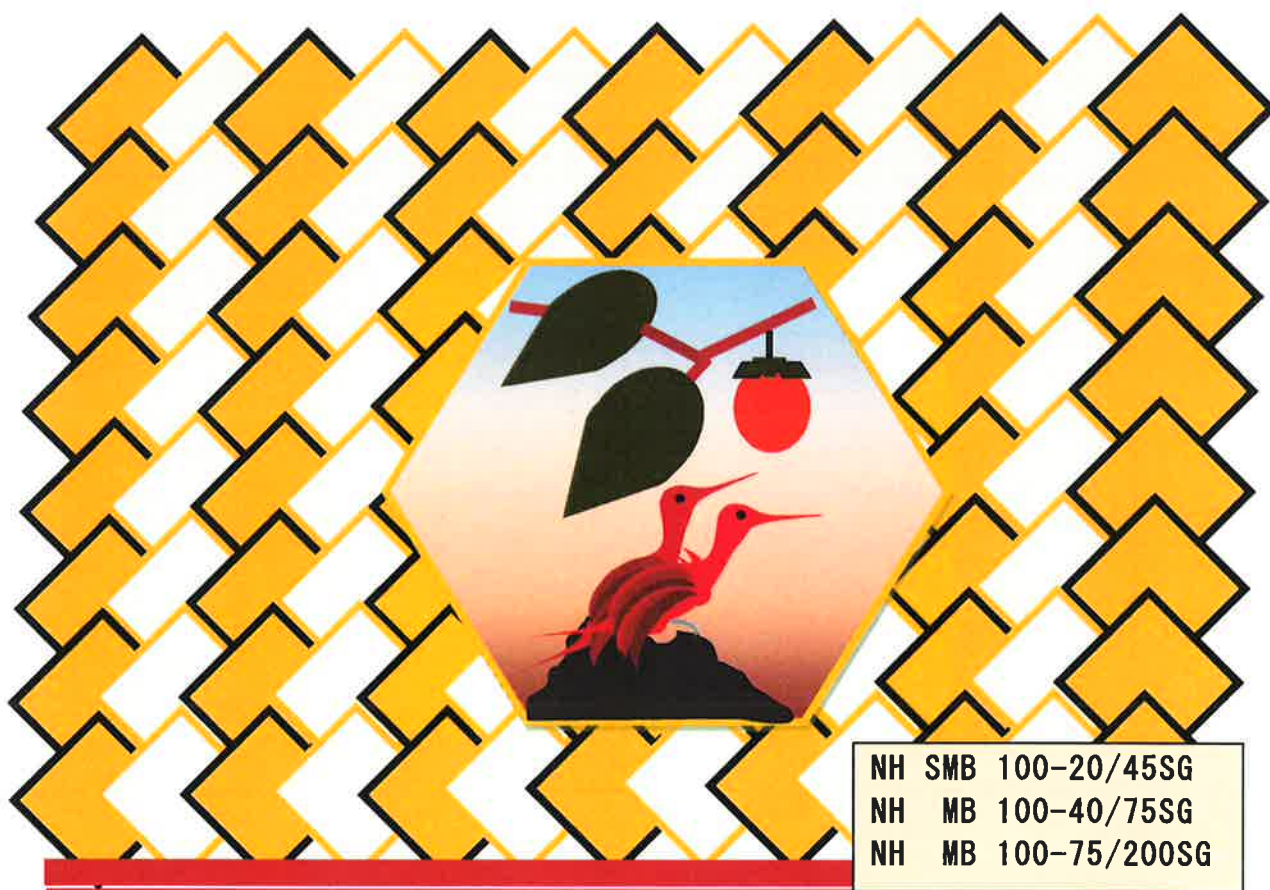


**CHROMATOREX**

# AMINO SILICA GEL

For Sugar separation



## Introduction

Sugar analysis and separations is broad application field in liquid chromatography. Up today, most separation media are developed as analytical grade only. Fuji Silysia chemical now developed new Amino-Type silica gel for preparative chromatography.

General NH type silica gel makes various separation problems for sugar separation when it is used under high amount of water condition. The pH of NH grade is too high (About 9.0). The higher pH makes denaturation of target compounds and damage of silica surface. Considering these problems, we developed a new grade, called SG (Sugar Grade) Amino silica. SG grade will minimize or avoid such a problem and enable to separate various sugar compounds easily.

## Chromatorex Physical Properties

There are 3 major grades to cover preparative applications:

- NH SMB100-20/45SG Cartridge column, HPLC column
- NH MB100-40/75SG Flash column, Cartridge column
- NH MB100-75/200SG Open column

The table shows typical physical properties of NH SG silica gel. These grades are bonded with amino silane and neutral pH:

Items	NH SMB100-20/45SG	NH MB100-40/75SG	NH MB100-75/200SG
<b>Base Silica gel</b>			
Surface area (m <sup>2</sup> /g)	300	300	300
Pore volume (ml/g)	0.80	0.75	0.75
particle size (μm)	30	60	110
<b>NH SG Grade</b>			
Bulk density (g/ml)	0.63	0.63	0.63
pH (5% slurry)	7.5	7.5	7.5

## Separation of Neutral Compounds

NH SG Silica grade shows similar separation of neutral compounds as NH silica.

Chromatography Operating Conditions:

Column: 20 x 360 mm glass column

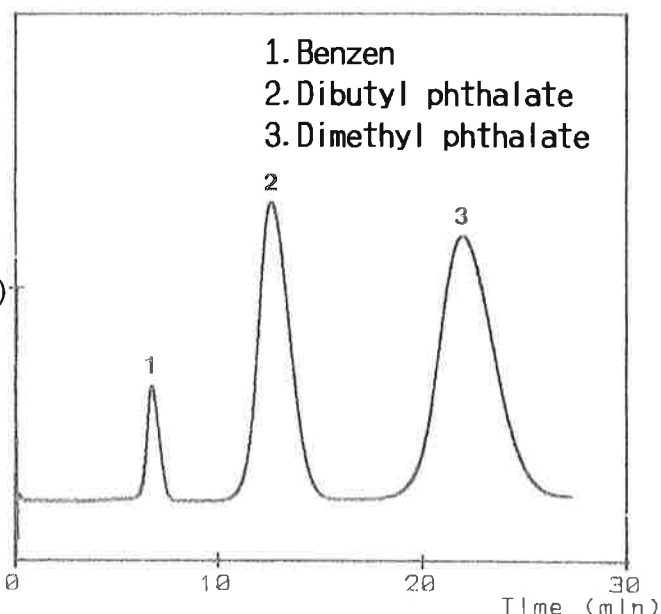
Silica: **NH MB100-75/200SG (50g)**

Mobile phase: Ethylacetate/n-hexane 10/90 (w/w)

Flow rate: 16 ml/min

Detection: UV-254 nm

Samples:  
1. Benzene  
2. Dibutyl phthalate  
3. Dimethyl phthalate



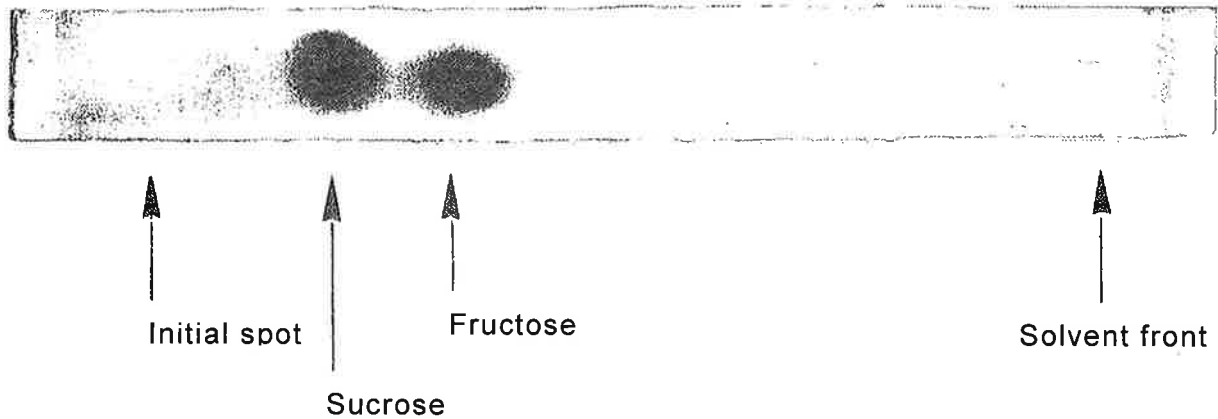
# Separation of Sugar Compounds

It is well known that amino functional groups react with ketone and/or carboxyl group. NH SG silica gel can separate several sugar compounds under organic/H<sub>2</sub>O solvent conditions without showing such a chemical reaction. NH SG grade is used in normal phase conditions, especially, Hydrophilic Interaction Chromatography mode (HILIC). As typical HILIC mode, elution speed can be increased when % of water in the organic solvent is increased. Followings are several separation application data with acetonitrile / water solvent condition.

## Pretest by TLC and HPLC

It is better to do pretest before using NH MB100-75/200SG. NH TLC and NH2 SPS100-5SG is available for this test.

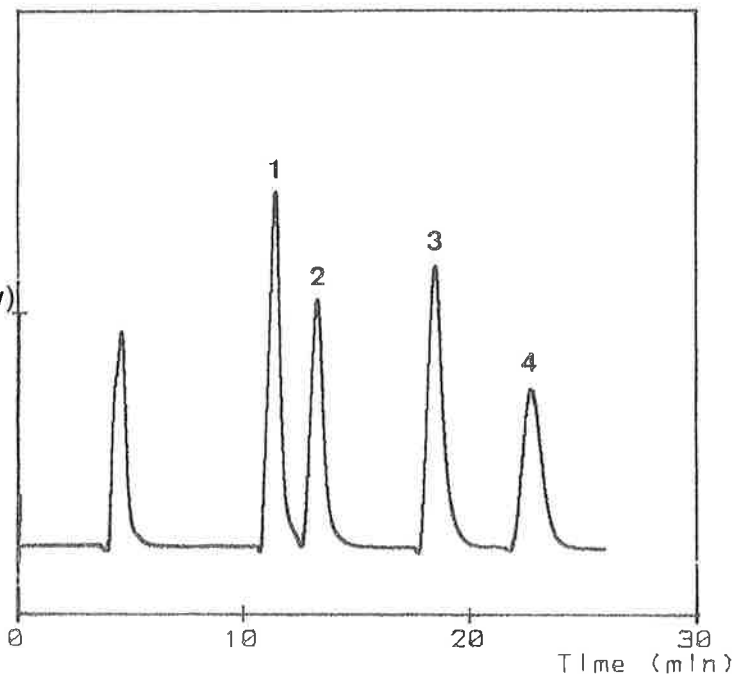
Separation by NH TLC (Acetonitrile/H<sub>2</sub>O 75/25(w/w))



Separation by HPLC

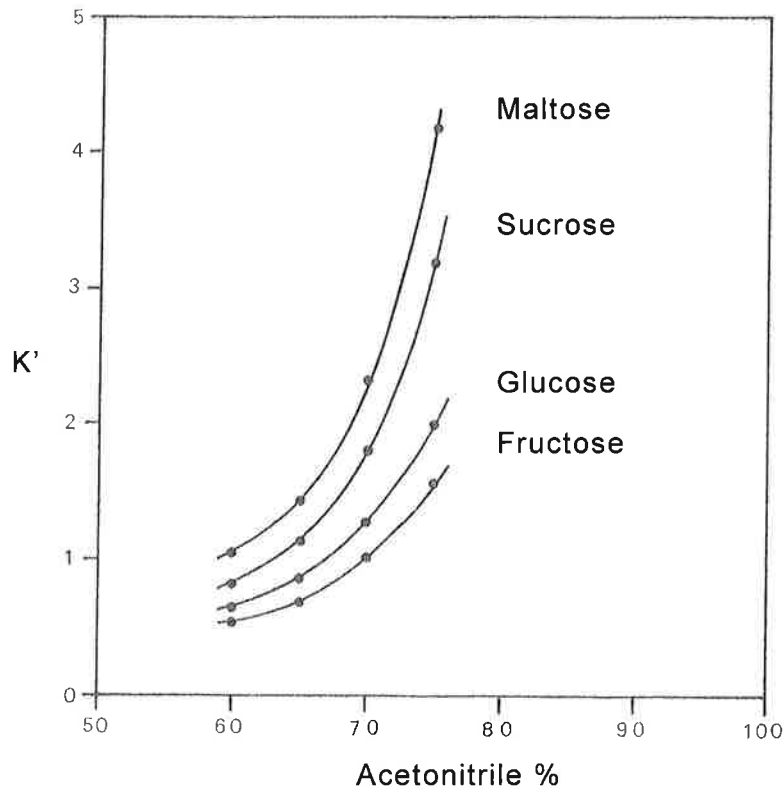
Chromatography Operating Conditions:

Column: 4.6x250mm HPLC column  
Silica: NH SPS100-5SG  
Mobile phase: Acetonitrile/H<sub>2</sub>O 75/25(w/w)  
Flow rate: 1 ml/min  
Detection: RI detector  
Samples: 1. Fructose  
2. Glucose  
3. Sucrose  
4. Maltose



## Solvent conditions

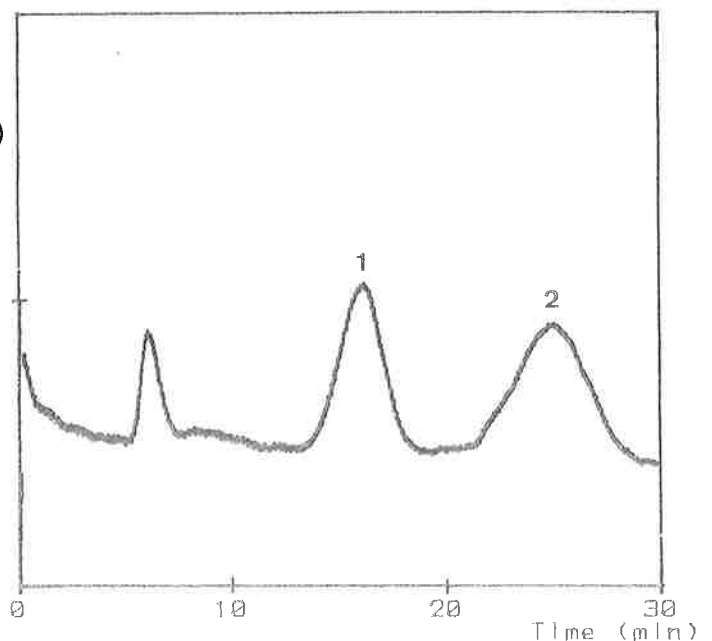
Solvents for sugar separation are normally Acetonitrile / H<sub>2</sub>O. Retention  $K'$  increases when the ratio of acetonitrile increases. The increase of acetonitrile should be controlled carefully, because solubility decreases when acetonitrile increases.



## Application

### (1) Sugar separation of monosaccharide and disaccharide

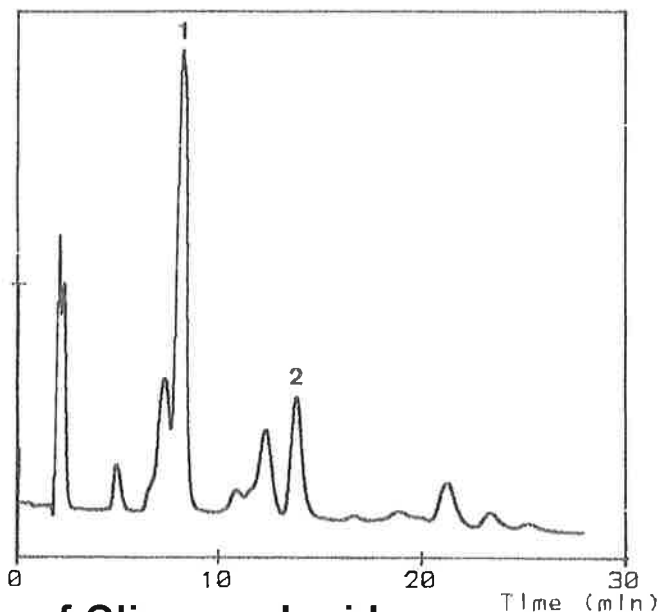
Column: 20 x 360 mm glass column  
Silica: NH MB100-75/200SG (50g)  
Mobile phase: Acetonitrile/H<sub>2</sub>O 75/25(w/w)  
Pressure: 44 kPa  
Flow rate: 16 ml/min  
Detection: RI detector  
Samples  
1. Fructose  
2. Sucrose



## (2) Sugar separation of Oligosaccharide

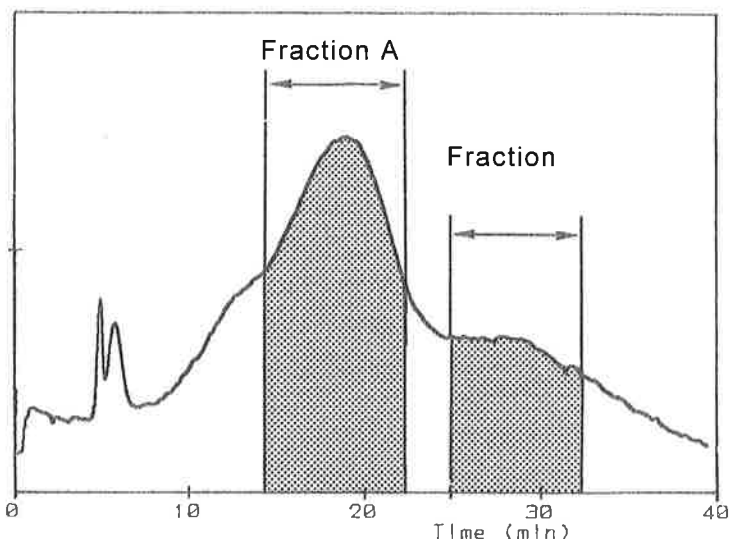
Pretest by HPLC

Column: 4.6x250mm HPLC column  
Silica: NH SPS100-5SG  
Mobile phase: Acetonitrile/H<sub>2</sub>O 70/30(w/w)  
Flow rate: 2 ml/min  
Detection: RI detector  
Samples: 1. Isomaltose  
2. Isomaltotriose

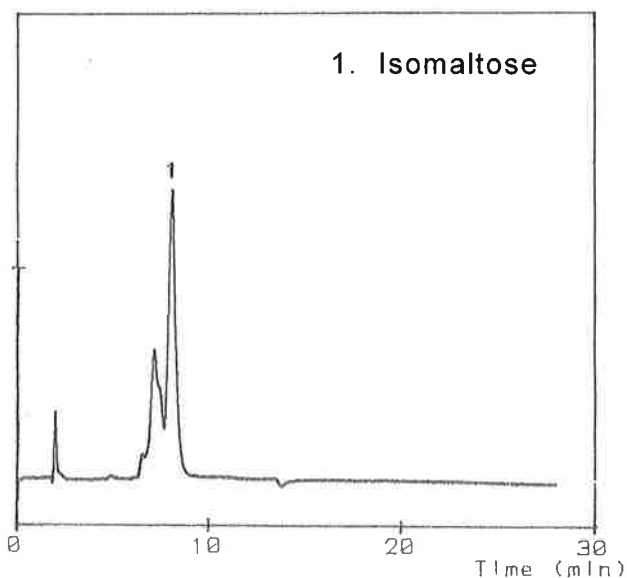


### (2-1) Preparative chromatography of Oligosaccharide

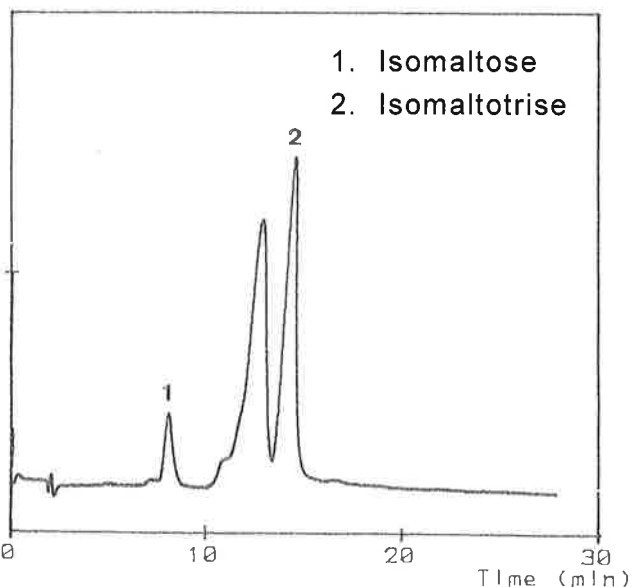
Column: 20 x 360 mm glass column  
Silica: NH MB100-75/200SG (50g)  
Mobile phase: Acetonitrile/H<sub>2</sub>O 70/30(w/w)  
Pressure: 73 kPa  
Flow rate: 16 ml/min  
Detection: RI detector



#### (2-2) Fraction A



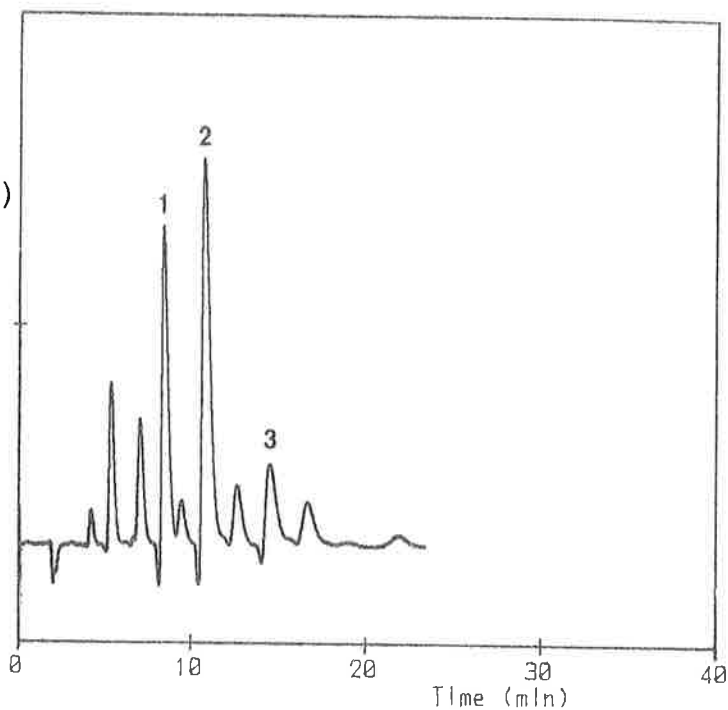
#### (2-3) Fraction B



### (3) Separation of cyclodextrin

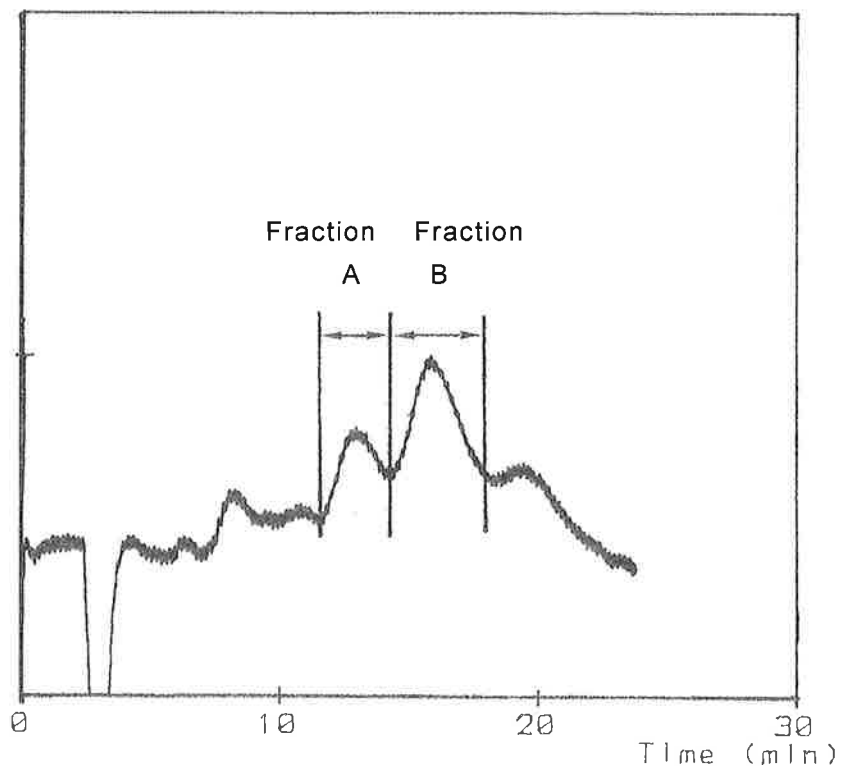
Pretest by HPLC

Column: 4.6x250mm HPLC column  
Silica:NH: SPS100-5SG  
Mobile phase: Acetonitrile/H<sub>2</sub>O 65/35(w/w)  
Flow rate: 2 ml/min  
Detection: RI detector  
Samples: 1.  $\alpha$ -cyclodextrin  
2.  $\beta$ -cyclodextrin  
3.  $\gamma$ -cyclodextrin



#### (3-1) Preparative chromatography of cyclodextrin

Column: 20x250mm HPLC column  
Silica: NH SMB100-20/45SG  
Mobile phase: Acetonitrile/H<sub>2</sub>O 65/35(w/w)  
Flow rate: 20 ml/min  
Detection: RI detector  
Sample Loading: 100mg/1ml



### (3-2) Analysis of fraction A Concentrated

Column: 4.6x250mm HPLC column

Silica: NH SPS100-5SG

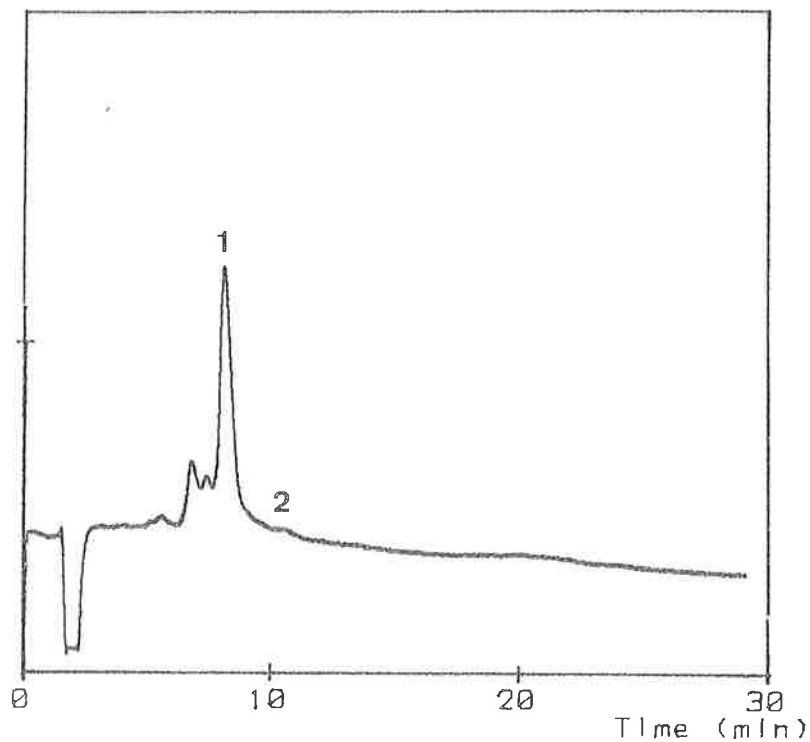
Mobile phase: Acetonitrile/H<sub>2</sub>O 65/35(w/w)

Flow rate: 2 ml/min

Detection: RI detector

1.  $\alpha$ -cyclodextrin

2.  $\beta$ -cyclodextrin



### (3-3) Analysis of fraction B Concentrated

Column: 4.6x250mm HPLC column

Silica: NH SPS100-5SG

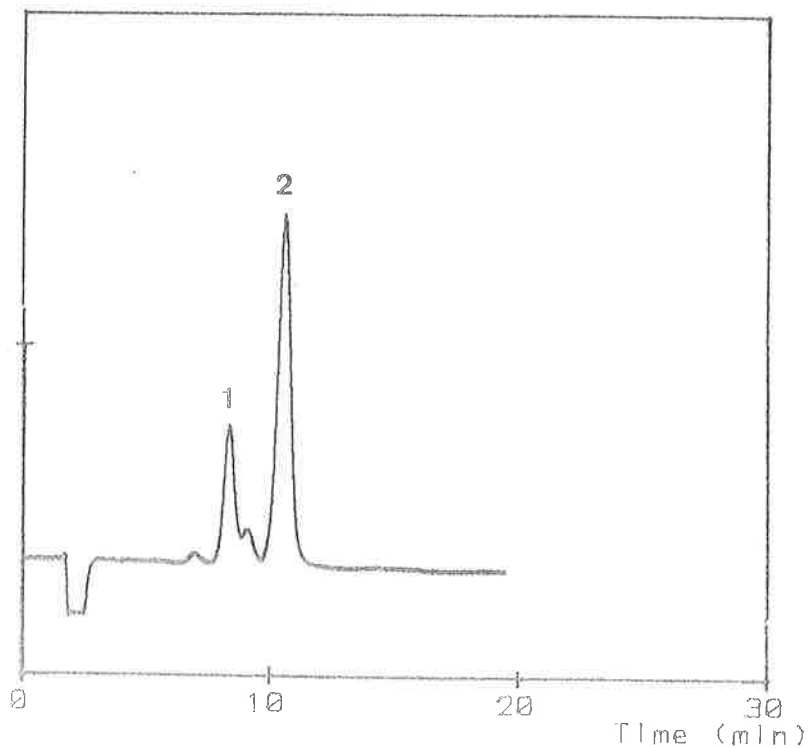
Mobile phase: Acetonitrile/H<sub>2</sub>O 65/35(w/w)

Flow rate: 2 ml/min

Detection: RI detector

1.  $\alpha$ -cyclodextrin

2.  $\beta$ -cyclodextrin





## **FUJI SILYSIA CHEMICAL LTD.**

23F, Nagoya International Center Bldg.,1-47-1,  
Nagono, Nakamura-ku, Nagoya-shi,  
Aichi-ken, Japan 450-0001

Phone : +81 52 587 0451

Fax : +81 52 587 0455

Website: <http://www.fuji-silysia.co.jp>

E-mail : [chromato-jpn@fuji-silysia.co.jp](mailto:chromato-jpn@fuji-silysia.co.jp)

## **FUJI SILYSIA CHEMICAL S.A.**

International Chromatography Center  
En Budron E 9

CH-1052 Le Mont-sur-Lausanne, Switzerland

Phone : +41 21 652 3436

Fax : +41 21 652 4737

E-mail: [Fuji.Silysia.SA@fuji-silysia.co.jp](mailto:Fuji.Silysia.SA@fuji-silysia.co.jp)

*We accept no responsibility for the information offered within this text. We offer this information for the consideration of our customers, but we cannot guarantee the accuracy of the information. Customers are advised to make their own tests to determine the effectiveness and safety of the products described within. Unless otherwise stated in writing in conjunction with our conditions of sale, we supply products without warranty; customers assume all responsibility and liability for any loss or damage resulting from handling or use of our products, whether they will be used alone or in conjunction with other products. No statement contained within is intended for any use that violates or infringes any statutory obligation or right, which belongs to a third party.*